

LACOUNTY WATER PLAN



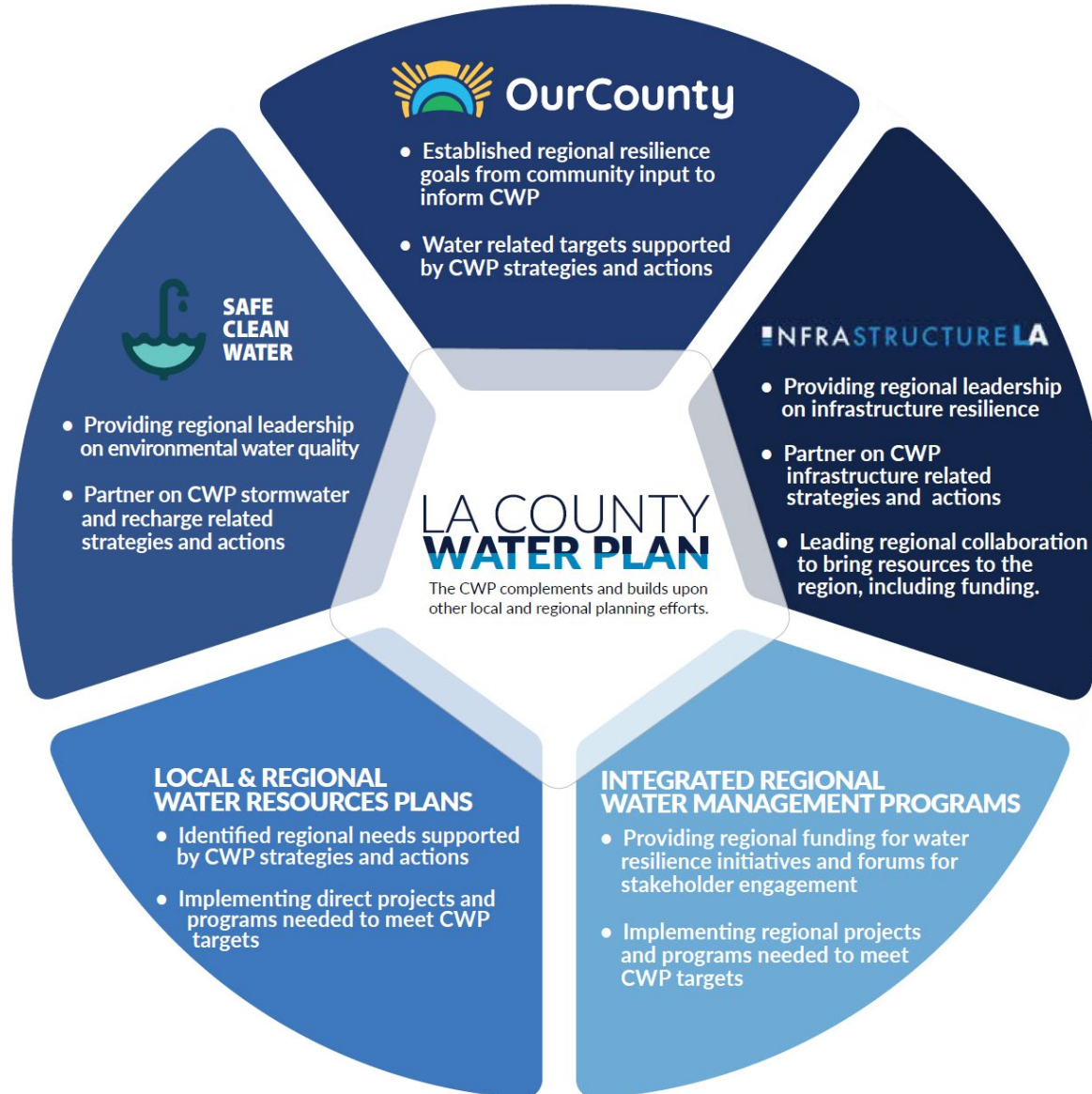


Vision

The CWP articulates a shared, inclusive, regional path forward to sustainably and equitably achieve safe, clean, and reliable water resources for Los Angeles County.

Complementary

LA COUNTY WATER PLAN



Efforts



Recent County Board Initiatives

Climate-Ready Communities

Examines impacts on vulnerable communities, populations, and infrastructure

Anti-Racism, Diversity & Inclusion (ARDI) Initiative

Articulates an anti-racist agenda that guides, governs, and increases the County's ongoing commitment to fighting racism

Equity in Infrastructure Initiative

Identifies and reduces disparities across geographies produced in the planning, delivery, and distribution of investments and services

Resilience Thru Collaboration



CALIFORNIA DEPARTMENT OF
WATER RESOURCES



PALMDALE WATER DISTRICT
A CENTURY OF SERVICE



LOS ANGELES COUNTY
SANITATION DISTRICTS
Converting Waste Into Resources



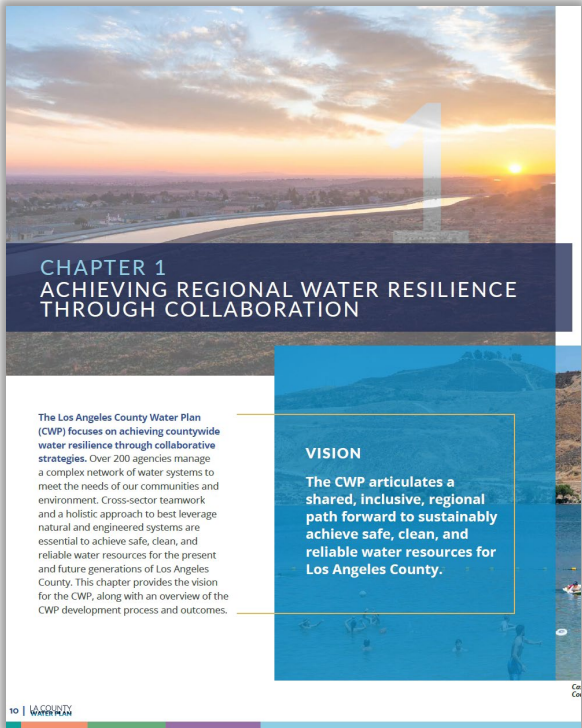
LA COUNTY
WATER PLAN



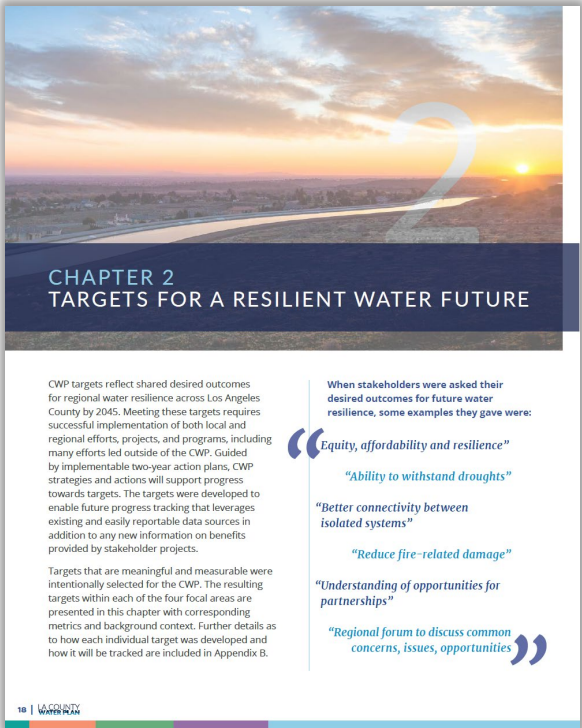
Development Process



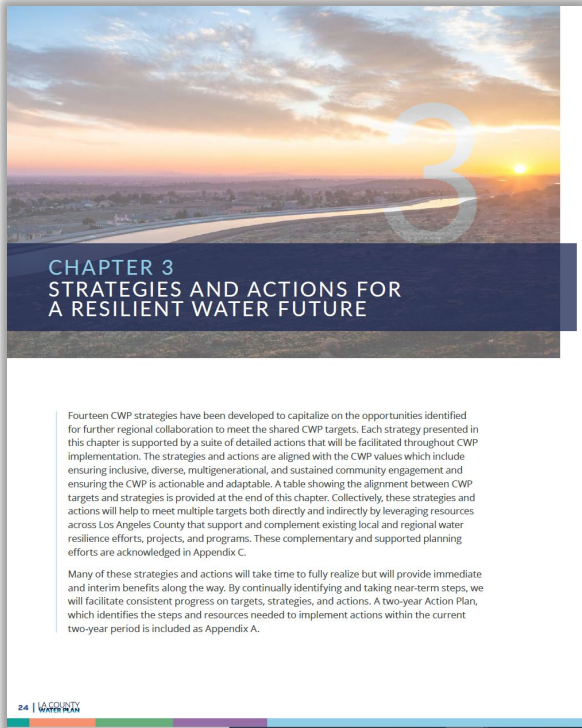
A Living Document



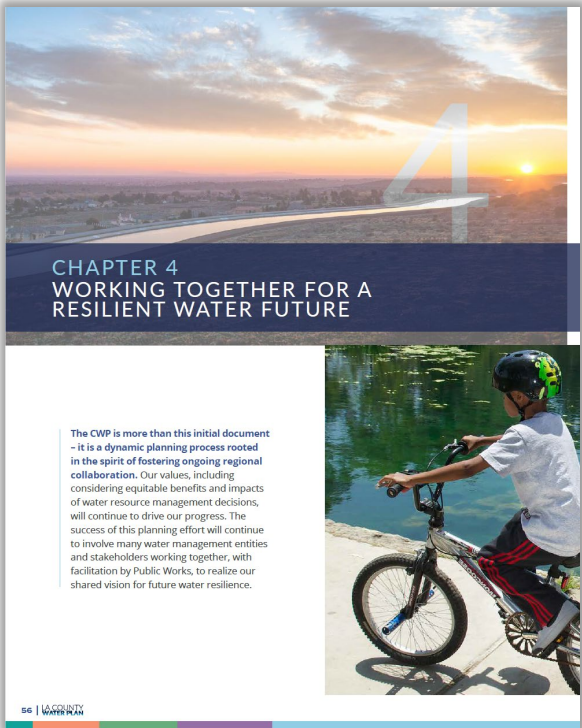
Vision



Targets



Strategies & Actions



Implementation

Plan Elements

Targets

- Provide a metric to measure and track progress implementing the CWP

Strategies

- Provide the regional, collaborative approaches to achieving the targets

Actions

- Specific steps to support the strategies
- Action Plan: Near-term implementation plan to be revised every two years

4 Key Focal Areas + 16 Targets

REGIONAL WATER
SUPPLY RELIABILITY



A B C D

GROUNDWATER
MANAGEMENT AND
QUALITY



E F G H

SMALL, AT-RISK SYSTEM
RESILIENCE AND DRINKING
WATER EQUITY



I J K L

WATERSHED
SEDIMENT MANAGEMENT



M N O P

Targets

Let's Take A Look ► Target B

B

**Increase local supply sources by 580,000
AFY**

Metric: Total water supply that is sourced
within Los Angeles County

14 Strategies



STRATEGY 1

Achieving the most efficient water use possible countywide



STRATEGY 2

Collaborating on consistent drought preparedness and response messaging



STRATEGY 3

Coupling local supply development with regional conveyance



STRATEGY 4

Managing salt and concentrate regionally



STRATEGY 5

Leveraging regional groundwater storage potential



STRATEGY 6

Collaborating on water quality needs and treatment technologies



STRATEGY 7

Enhancing cost-effectiveness of pumping and treating impaired groundwater production



STRATEGY 8

Protecting coastal groundwater basins from seawater intrusion



STRATEGY 9

Facilitating regional groundwater recharge understanding and initiatives



STRATEGY 10

Facilitating natural infiltration of precipitation



STRATEGY 11

Providing regional support for small, at-risk water systems



STRATEGY 12

Mitigating wildfire effects on water supply and quality



STRATEGY 13

Managing invasive species in riparian areas



STRATEGY 14

Facilitating sediment management and debris removal from flood control facilities

Let's Take A Look ► Target B



STRATEGY 1

Achieving the most efficient water use possible countywide



STRATEGY 2

Collaborating on consistent drought preparedness and response messaging



STRATEGY 3

Coupling local supply development with regional conveyance



STRATEGY 4

Managing salt and concentrate regionally



STRATEGY 5

Leveraging regional groundwater storage potential



STRATEGY 6

Collaborating on water quality needs and treatment technologies



STRATEGY 7

Enhancing cost-effectiveness of pumping and treating impaired groundwater production



STRATEGY 8

Protecting coastal groundwater basins from seawater intrusion



STRATEGY 9

Facilitating regional groundwater recharge understanding and initiatives



STRATEGY 10

Facilitating natural infiltration of precipitation



STRATEGY 11

Providing regional support for small, at-risk water systems



STRATEGY 12

Mitigating wildfire effects on water supply and quality



STRATEGY 13

Managing invasive species in riparian areas



STRATEGY 14

Facilitating sediment management and debris removal from flood control facilities

CWP Strategies & Actions
+ Other Local & Regional Efforts

CWP Targets

Advancing Towards Resiliency

Adopted by LA County Board of Supervisors on December 5, 2023

- Increase local water supply by approximately 600,000 AFY by 2045
 - Water Resiliency Summit
- Continued Regional Collaboration / 2-yr action plans

**Keep
in touch!**

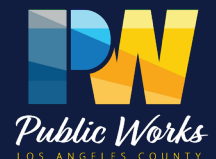
LACountyWaterPlan.org

LACountyWaterPlan@pw.lacounty.gov

Lee Alexanderson, P.E.

Senior Civil Engineer

LAlexanderson@pw.lacounty.gov



LACountyWaterPlan.org

